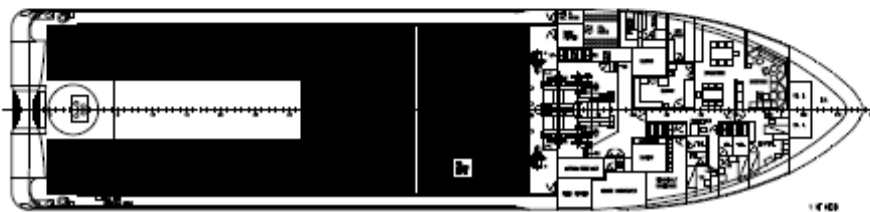
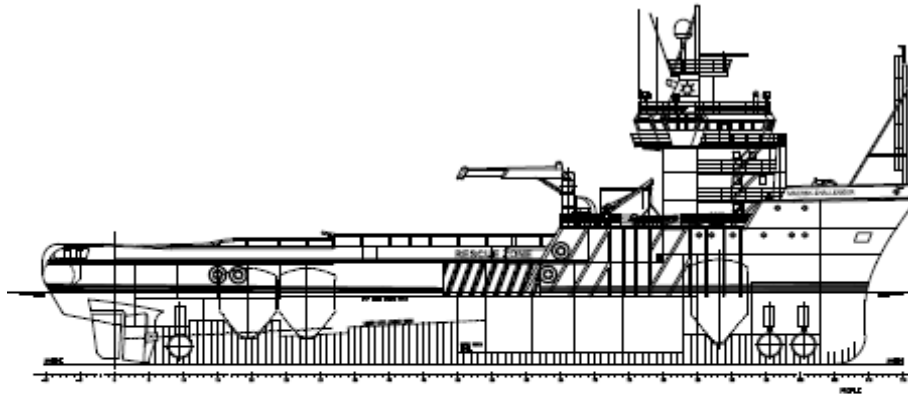


AHTS BLUE ARIES

ANCHOR HANDLING TUG SUPPLY VESSEL



BLUE STAR LINE A/S

Markedspladsen 7, DK 5600 Faaborg
Tel. +45 63 60 00 52 - 24 hrs.Duty phone +45 22 16 06 02 – Fax +45 63 60 01 09
www.bluestarline.com th@bluestarline.com

AHTS BLUE ARIES

ANCHOR HANDLING TUG SUPPLY VESSEL

REGISTRATION

Name	AHTS Blue Aries
Owner	Blue Star Line A/S
Year built/rebuilt	1986 / 2014
Flag	Danish
Classification	DNV/GL +1A1 Tug-Supply Vessel Ice-C SF E0 DPS 2
IMO No.	8401963
Call Sign	OWRC2
Home Port	Faaborg
ISM/ISPS	DNV Certified

MAIN CHARACTERISTICS

Length overall	76.40 m
Length between P.P	66.00 m
Breadth moulded	17.60 m
Depth moulded	9.00 m
Draft max.	6.60 m
Gross tonnage	2887 tons

PROPULSION

Main Engine	4 x BW Alpha 12- 28/32 Total 10560 kW
Propel	2 x CP propellers
Thrusters	Bow 2 x 1200 hp Stern 1 x 1200hp

AUXILIARIES

2 x 8V MAN
1 x 6L MAN

BOLLARD PULL

173 Tons

CARGO CAPACITY

Clear deck area	630 sqm
Clear deck length	42.20 m
Clear deck breadth	15,00 m
Deck load	1360 mt
Gas oil	1850 cbm
Drill / Ballast water	1700 cbm
Potable water	600 cbm
Rig chain lockers	2 x 133 cbm

PERFORMANCE

Maximum Speed	16 knots
Service Speed	8 knots

CONSUMPTION

Max speed / towing abt.	45 cbm/day
Economical speed abt.	8-9 cbm/day
DP mode abt.	11-13 cbm/day

ACCOMMODATION

Officers	6 single cabin with toilet /shower
Crew	4 single cabin with toilet /shower
Passengers	6 single cabin with toilet /shower 1 x 2 pax. cabin 1 x 3 pax. cabin
Hospital	1 x 2 bed
Vessel is fully air conditioned for hot and cold climate	

TOWING / AH EQUIPMENT

Maker	Brattvaag
Type	Waterfall
Drums	3
AH drum	2 xMax. pull 250 ts. Capacity each drum 750 m x 76 mm wire
Towing drum	Max. pull 250 ts. Capacity 1100 m x 76 mm wire
Shark jaws	2 x 500 ts. Karm Fork
Towing pins	2 x 170 ts. Karm Fork
Stern Roller	4.00 m x 2.75 m

DECK EQUIPMENT

Capstans	2 x 8-12 ts
Crane	2 ts. at outreach 19.00 m
Tugger winch	2 x 10-15 ts

CARGO PUMPS

Gas oil	100 cbm/hr at 10 bar
Drill water	100 cbm/hr at 10 bar
Fresh water	100 cbm/hr at 10 bar

NAVIGATION/COMM. EQUIPMENT

3 x Radars
3 x Gyrocompass
1 x Echosounder
1 x Autopilot
2 x GPS
1 x GMDSS Station A3
2 x ECDIS sea chart
Navis Joystick
Navis DP 2

SURVEY. / POS. EQUIPMENT

Navi-pack survey system
2 x Veripos LID2-GG2 DGPS
CyScan radar
3 x Heave pitch and roll sensor

Markedspladsen 7, DK 5600 Faaborg

Tel. +45 63 60 00 52 - 24 hrs.Duty phone +45 22 16 06 02 – Fax +45 63 60 01 09

www.bluestarline.com th@bluestarline.com